



Explore →

Districts →

FEBRUARY 2014 ▼



JOURNEY TO EXCELLENCE

Northeast-A4 Laurel Highlands (#527)
Pittsburgh, PA
2014-03-17

Composite Score (2800 max)
Current Year-to-Date: 900 of 2800
Last Year-to-Date: 1100 of 2700



Overall status
B

Fiscal Management

Fundraising

Endowment
-8.84%

Market Share

Membership Growth
-8.84%

Youth Retention
-8.58%

Cub Scout Advancement
.98%

Boy Scout Advancement
-2.44%

Cub Scout Camping

Boy Scout Camping

Community Service
0.2 hrs

Youth-Serving Executives
-3

Commissioner Service
11.24%

Unit Visitations
-5.33%

Voice of the Scout
5.77%

Council Leadership
0

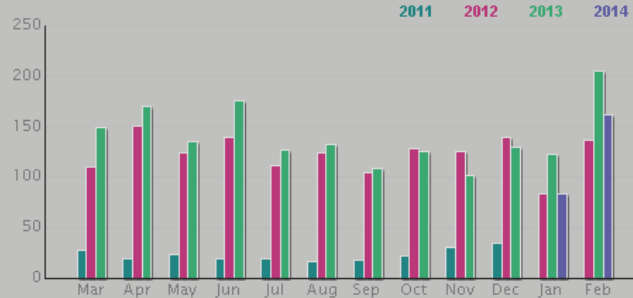
District Leadership
-2.0%

Unit Leadership
.52%

UNIT SERVICE: Unit Visitations

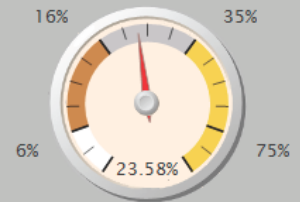
Comparative Performance

Units Receiving Minimum Number of Visits



Determined Standard

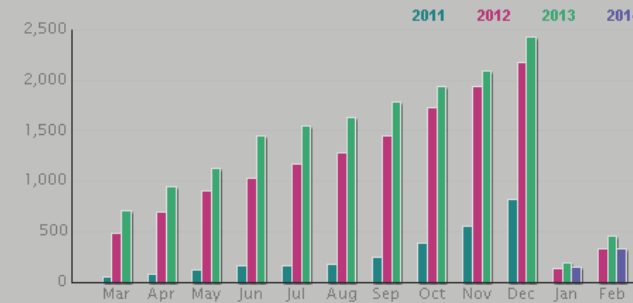
Visitation Rate:



23.58%

Comparative Standard Details

Total Visits to All Units



Council Score: SILVER = 50 points

Great work, this council has been awarded silver for its ability to maintain or increase the number of contacts to units recorded in the Unit Visit Tracking System.

The calculation

This status is determined by the number of unique units receiving six or more visits or contacts as reported in the Unit Visit Tracking System (UVTS), divided by the total number of traditional units. Beginning in 2012, the performance standard is a factor in how this criterion is scored.

| Level | Determined standard | Performance standard |
|--------|---------------------------------------|-----------------------------|
| Gold | 33% of units visited 6 times per year | or 10% and 2 point increase |
| Silver | 10% of units visited 6 times per year | or 5% and 2 point increase |
| Bronze | 5% of units visited 6 times per year | or 2 point increase |